



# WATER PASSING CONCEPT

PERMEABLE AND POROUS PAVING





## THE SUSTAINABLE SOLUTION TO FLOODING

Water management and flood alleviation is in the spotlight. Traditionally, rainwater falling on paved surfaces is collected in drains and discharged via sewers.

**GRASS CONCRETE TILES 60X40X12 FLAT AND PERFORA 21X10.5X8 GREY**



However, the frequency and intensity of rainfall is increasing, leading to a greater risk of flooding. Our current sewer systems are not equipped for this. Moreover, it's unnecessary to direct all rainwater straight to the sewer. Fresh rainwater doesn't need to be unnecessarily purified and can flow directly back into nature.

This is where the use of permeable paving comes to the fore. Permeable paving ensures that rainwater is discharged directly into the ground at the place it falls, significantly reducing the risk of flooding. It's also important to adapt the sub-base to enhance infiltration and water storage and by making the right adjustments, sustainable drainage systems (SuDS) can be created, allowing the rainwater to be effectively absorbed into the ground.





**PERFORA 22X11X8 BLACK, GREY, AND  
NOVOSTONE CAP BLANC SHOTBLASTED**





**PERCOLA 20X20X8 NOVOSTONE KINGSTONE,  
BLUESTONE, AND FJORD SHOTBLASTED**

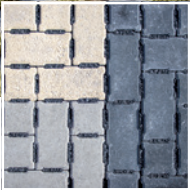




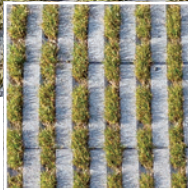
**GRASS CONCRETE TILES  
LINEAR 60X40X12**



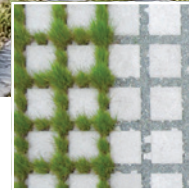
# PERFORA LINEAR 30X10X10



Perfora Standard



Perfora Linear



Perfora Square



## PERFORA STANDARD

**Dimension:** 21x10.5x8 cm  
22x11x8 cm  
22x11x10 cm

**Certification:** Benor, PTV126 and KOMO.

Available in all our colours and finishes.

## PERFORA LINEAR

**Dimension:** 30x10x10 cm  
**Spacing:** 0% open  
22% open  
40% open

**Certification:** Benor, PTV126 and KOMO.

Available in all our colours and finishes.

## PERFORA SQUARE

**Dimension:** 14x14x8 cm  
20x20x8 cm  
25x25x10 cm

**Certification:** Benor, PTV126 and KOMO.

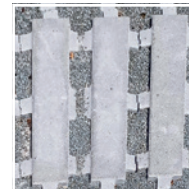
Available in all our colours and finishes.



Grass Concrete Tile Flat



Grass Concrete Tile Grooved



Grass Concrete Tile Linear

## GRASS CONCRETE TILE FLAT

**Dimension:** 60x40x10 cm  
60x40x12 cm  
60x40x15 cm

**Certification:** Benor, PTV126 and KOMO.

## GRASS CONCRETE TILE GROOVED

**Dimension:** 60x40x10 cm  
60x40x12 cm  
60x40x15 cm

**Vegetation:** 68%  
**Certification:** Benor, PTV126 and KOMO.

## GRASS CONCRETE TILE LINEAR

**Dimension:** 60x40x12 cm

**Certification:** Benor, PTV126 and KOMO.

## POSSIBLE INFILTRATION SYSTEM

### PERMEABLE PAVING



< Joint material:  
limestone/porphyry/coarse sand

< Gravel: 2/7  
3cm after compaction

< Optional: Non-woven geotextile

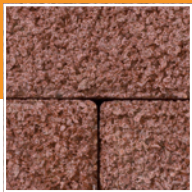
< Gravel 20/30  
(depending on the substructure and loadings)

< Gravel 40/60  
(depending on the substructure and loadings)

< Optional: Non-woven geotextile

At Blyko, we understand the growing importance of climate-adaptive public spaces in times of climate change. That's why we introduced our sustainable permeable paving products.

An effective infiltration system is crucial for the performance of permeable paving and depending on the type of subsurface, the correct type of infiltration system must be chosen. The model below shows an example of the possible composition of this system.



Piove

#### PIOVE

**Dimension:** 22x11x8 cm  
22x11x10 cm  
22x22x8 cm  
22x22x10 cm

**Certification:** Benor, PTV126 and KOMO.



Percola

#### PERCOLA

**Dimension:** 20x20x8 cm

**Certification:** Benor, PTV126 and KOMO.

Our permeable paving systems are specifically designed to allow rainwater to penetrate the ground in situ. All our paving is carefully tested in our laboratory.

Whether creating permeable driveways, pedestrian areas, roads, or car parks, our products offer not only functionality and beautiful aesthetics but also contribute to a greener and more sustainable living environment.

Blyko Permeable paving can be supplied in almost all colours and finishes from our range, including the popular colours and finishes of Novostones and Kograstones.

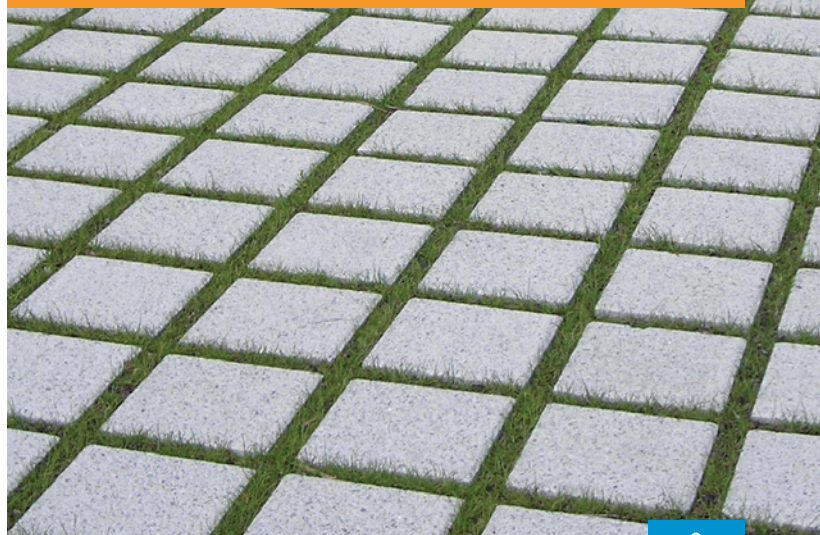
**The water passing concept.**



**PIOVE 22X11X8  
DARK GREY AND BLACK**



**PERFORA SQUARE 25X25X10**



Feel free to contact one of our sales representatives at any time.

**Netherlands Office**

Mariadijk 6a • 4588 KJ Walsoorden

Tel: +31 114 684 000

[bleijko@bleijko.com](mailto:bleijko@bleijko.com)

**France Office**

278 Avenue de la Marne • F-59700 Marcq-en-Barœul

Tel: +33 320 98 89 99

[bleijkofrance@bleijko.com](mailto:bleijkofrance@bleijko.com)

**Belgium Office**

Beurtkaai 4 • 8800 Roeselare

Tel: +32 51 27 23 50

[roeselare@bleijko.com](mailto:roeselare@bleijko.com)

**United Kingdom Office**

Maritime House • Basin Road North • Hove, East Sussex • BN41 1WR

Tel: +44 333 011 6114

[sales@blyko.co.uk](mailto:sales@blyko.co.uk)



[blyko.co.uk](http://blyko.co.uk)